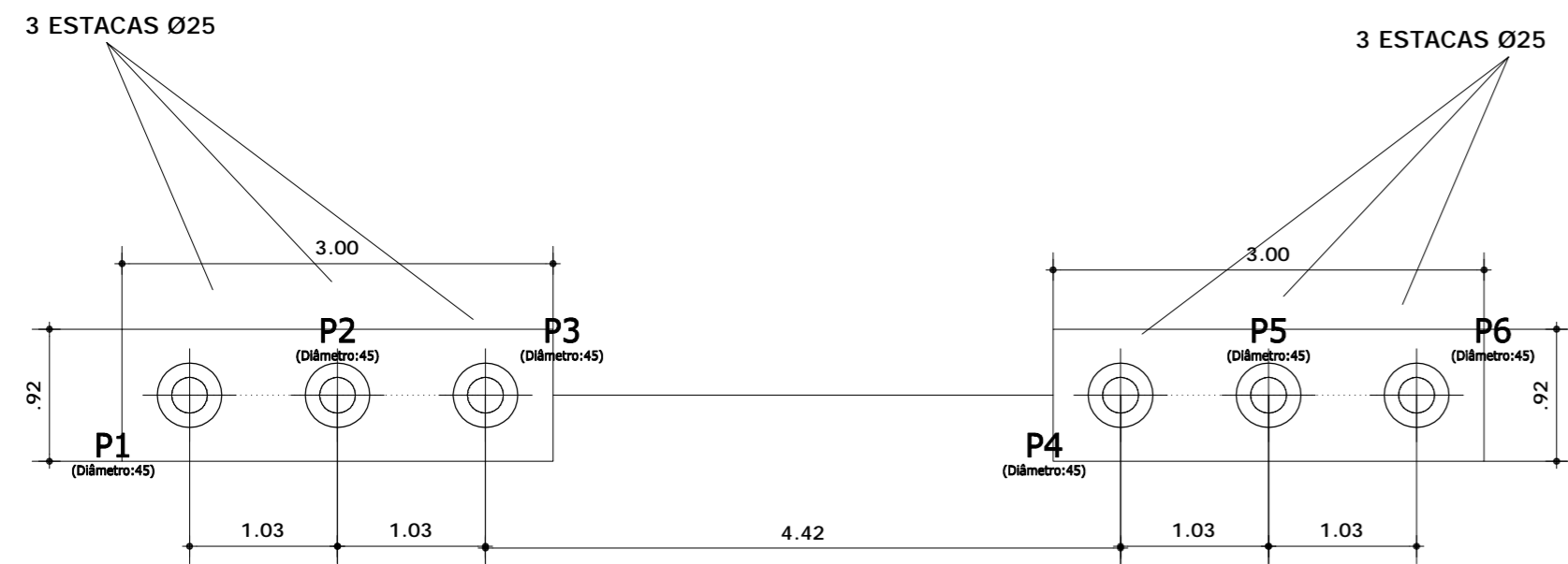
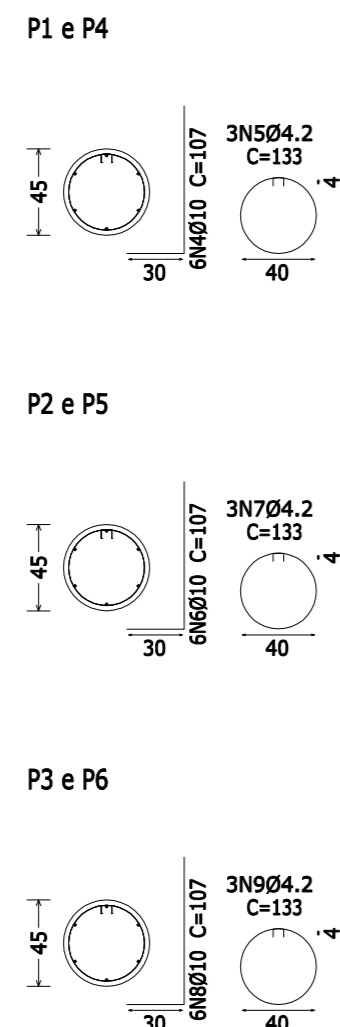
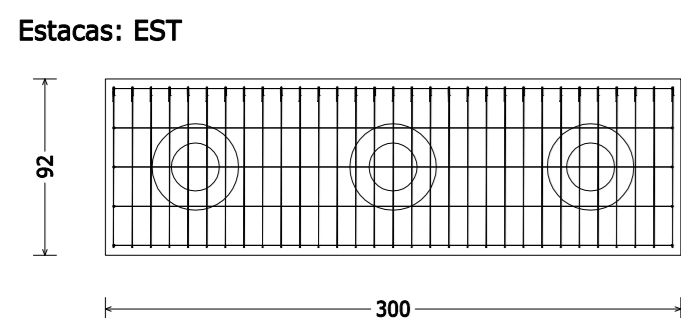
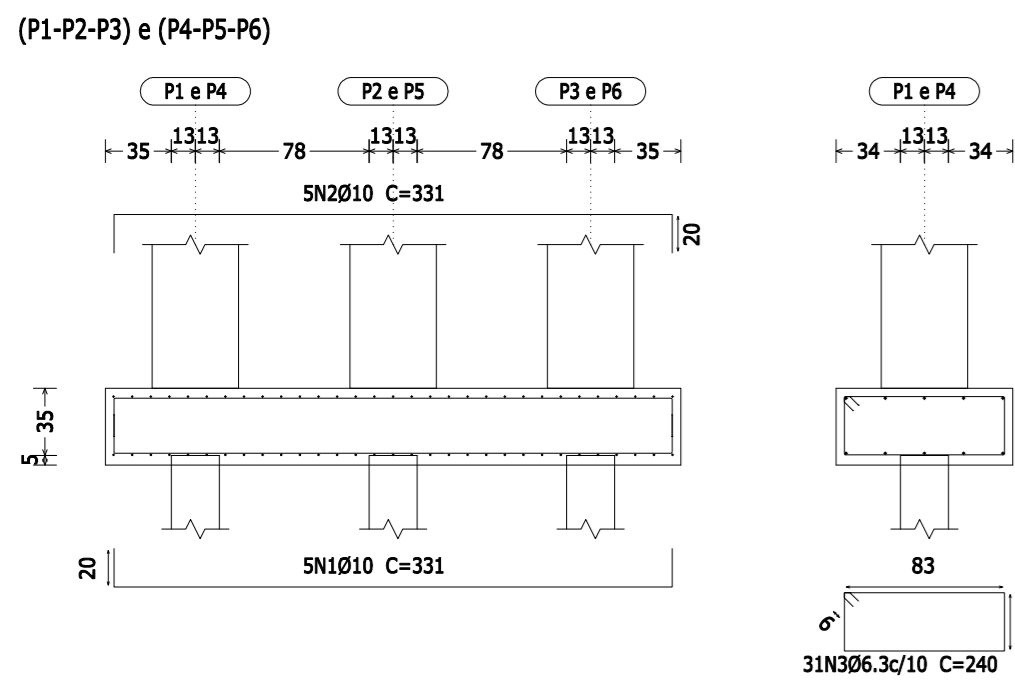


Elemento	Pos.	Diam.	Q.	Dob. (cm)	Reta (cm)	Dob. (cm)	Comp. (cm)	Total (cm)	CA-50-A (kg)	CA-60-B (kg)
(P1-P2-P3) (P4-P5-P6)	1	Ø10	5	20	291	20	331	1655	10.4	
	2	Ø10	5	20	291	20	331	1655	10.4	
	3	Ø6.3	31		240		240	7440	18.4	
	4	Ø10	6	30	77		107	642	4.0	0.4
	5	Ø4.2	3		133		133	399	4.0	0.4
	6	Ø10	6	30	77		107	642	4.0	0.4
	7	Ø4.2	3		133		133	399	4.0	0.4
	8	Ø10	6	30	77		107	642	4.0	0.4
	9	Ø4.2	3		133		133	399	4.0	0.4
Total+10%:									56.3	1.3
(x2):									112.6	2.6
Ø4.2:									0.0	2.6
Ø6.3:									40.4	0.0
Ø10:									72.2	0.0
Total:									112.6	2.6



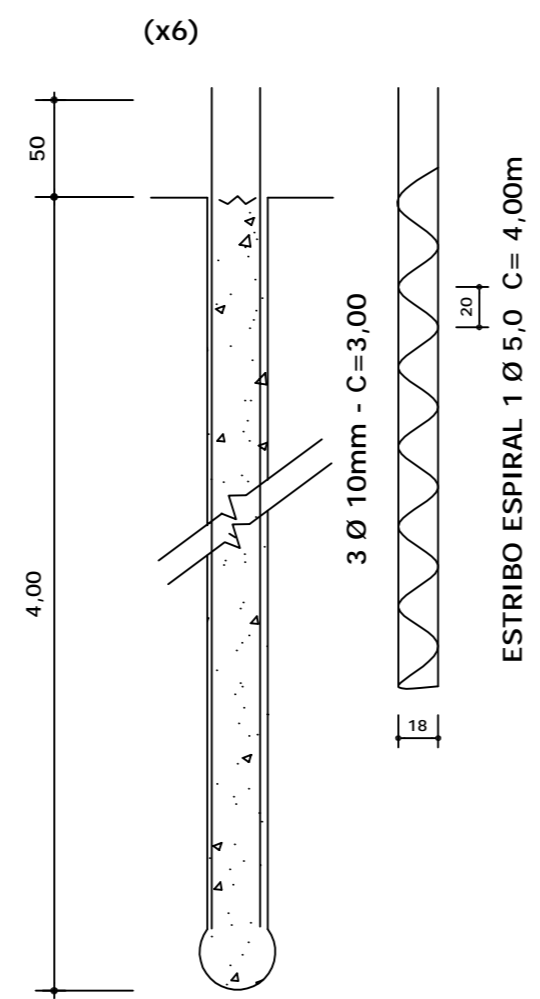
PLANTA FUNDAÇÃO
ESCALA 1/50



Resumo Aço Fundação	Comp. total (m)	Peso+10% (kg)	Total
CA-50-A Ø6.3	148.8	40	112
CA-60-B Ø10	104.7	72	112
CA-60-B Ø4.2	23.9	3	3
Total			115

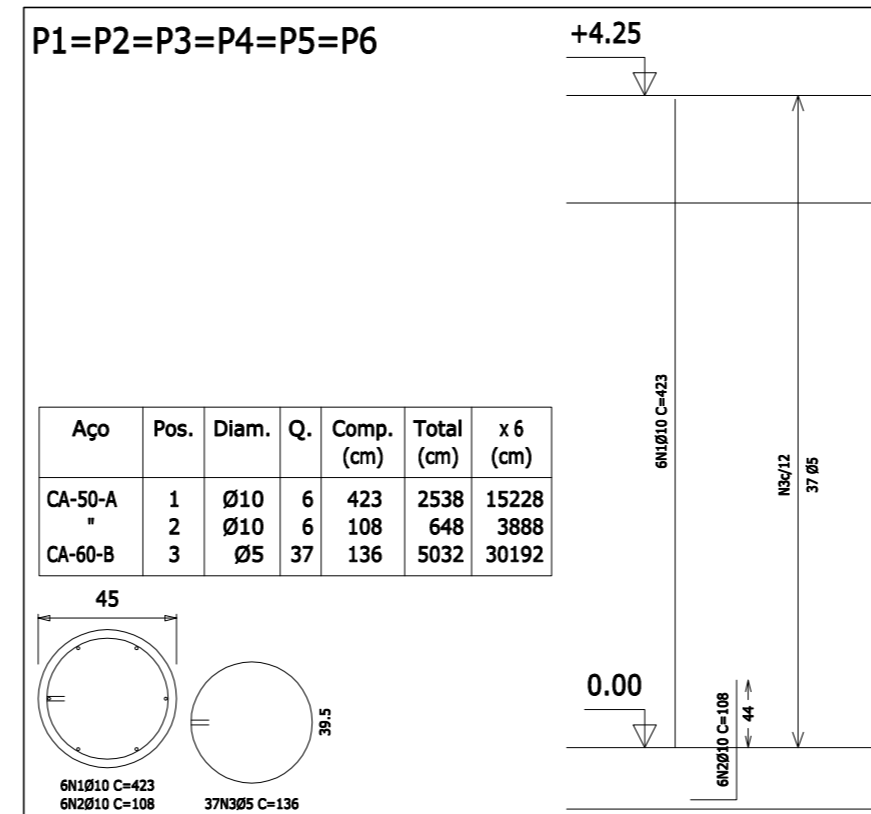
RESUMO CONCRETO = 2,20 m³
AREA DE FORMA = 3,13 m²

DETALHES DAS ESTACAS
COMPRESSÃO



RESUMO

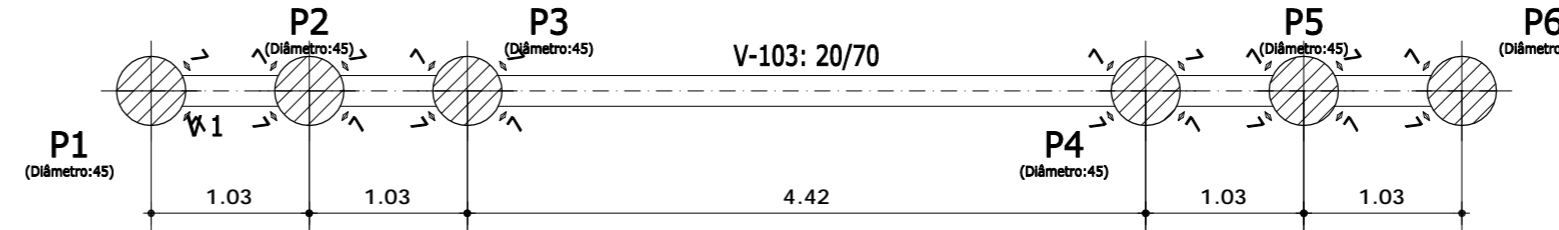
FERRO CA-50
Ø 10mm 6 barras
Ø 5mm 5 barras
TOTAL CONCRETO = 1,0 m³
CIMENTO = 6 SACOS
AREIA = 0,8 m³
PEDRA = 0,8 m³



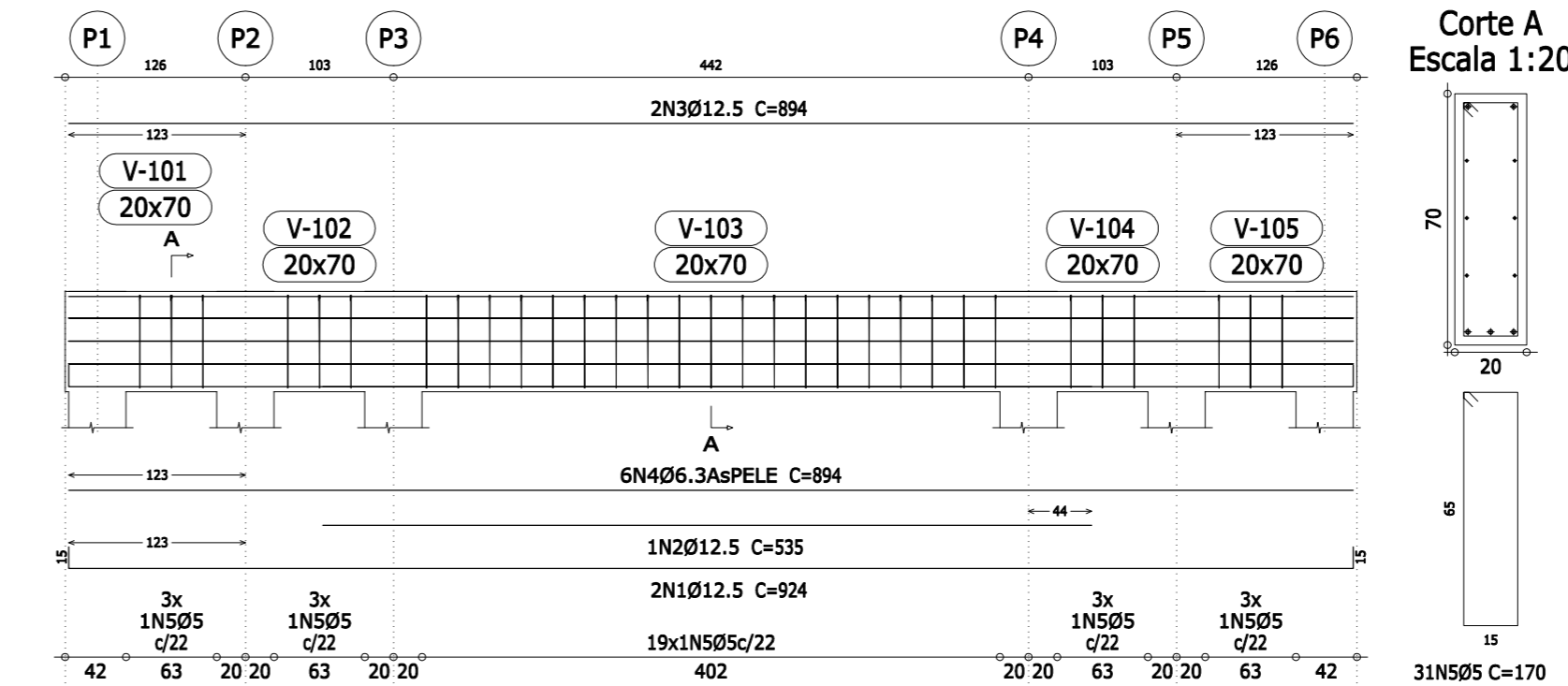
Resumo Aço VIGA Pilares	Comp. total (m)	Peso+10% (kg)	Total
CA-50-A Ø10	190.8	132	132
CA-60-B Ø5	301.9	52	52
Total			184

RESUMO CONCRETO = 3,36 m³
AREA DE FORMA = 30,0 m²

PLANTA FORMA VIGA
ESCALA 1/50

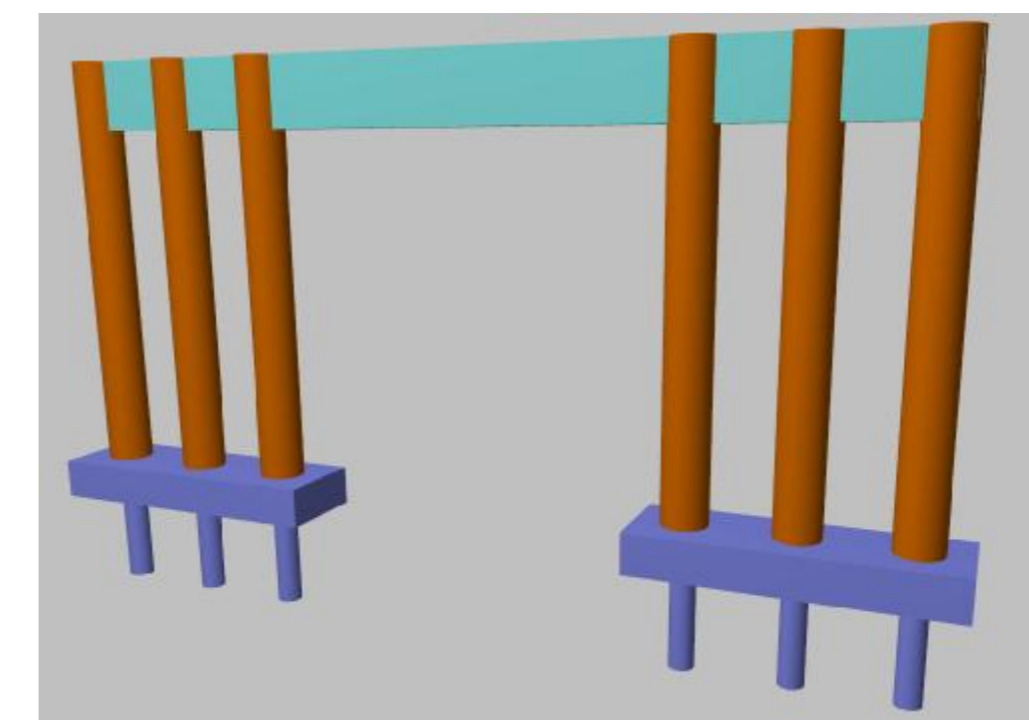


V 1
Escala 1:50



Resumo Aço VIGA Vigas	Comp. total (m)	Peso+10% (kg)	Total
CA-50-A Ø6.3	53.6	15	60
CA-60-B Ø12.5	41.7	45	60
CA-60-B Ø5	52.7	9	9
Total			69

RESUMO CONCRETO = 1,26 m³
AREA DE FORMA = 10,39 m²



PERSPECTIVA ESTRUTURA

Elemento	Pos.	Diam.	Q.	Dob. (cm)	Reta (cm)	Dob. (cm)	Comp. (cm)	Total (cm)	CA-50-A (kg)	CA-60-B (kg)
V 1	1	Ø12.5	2	15	894	15	924	1848	18.1	
	2	Ø12.5	1		535		535	535	5.2	
	3	Ø12.5	2		894		894	1788	17.5	
	4	Ø6.3	6		894		894	5364	13.3	
	5	Ø5	31		170		170	5270		8.3
Total+10%:									59.5	9.1
Ø5:									0.0	9.1
Ø6.3:									14.6	0.0
Ø12.5:									44.9	0.0
Total:									59.5	9.1



PERSPECTIVA ARTISTICA

Total obra - Superfície total: 2.24 m²

Elemento	Formas (m ²)	Volume (m ³)	Barras (kg)
Vigas: fundo	1.29	1.26	69
Forma lateral	9.10		
Pilares (Sup. Formas)	30.00	3.36	184
Total	40.39	4.62	253
Índices (por m ²)	18.031	2.063	112.95

PROJETO ESTRUTURAL

OBRA	DISCRIMINAÇÃO	DATA
PORTAL DE ENTRADA		AGOSTO/2017
LOCAL		DESENHO
CEMITEIRO MUNICIPAL	fck=200kg/cm ² fyk=5000kg/cm ²	
PROPRIETÁRIO		REVISÃO
PREFEITURA DE PEDRINHAS PAULISTA		
DESCRIÇÃO		FOLHA
ARMAÇÃO		UNICA